

# Blick

## Investments

OBO continues to grow and is investing in the expansion of its international sites.

## Industrial solutions

Whether grocery or PV industries, we offer complete solutions for all sectors.

## Sustainability

The environment at a glance – with sustainable logistics, EPDs and the OBO bees.



# Contents

## 03 Editorial

Christopher Palausch on stability even in globally challenging times

## 04 Investment | Menden site

The Menden site has a new logistics centre, in addition to the Metal Competence Centre

## 06 Investment | Subsidiaries

The subsidiaries in Croatia, Switzerland, the US and Belgium are expanding their logistics areas

## 08 Simply the Black

Elegant, refined, emotive: Premium solutions for surface-mounted installations with OBO BlackLine

## 10 Food and beverage industry

OBO provides safety and hygiene for production, conveyor technology and storage

## 12 Photovoltaic system solutions

Planning for a bright future: Magic PV systems with OBO Construct

## 14 CO<sub>2</sub> footprint for more than 29,000 OBO products

More transparency on the path to a more sustainable future

## 16 Sustainability in logistics

Environmentally friendly shipping and packaging solutions

## 17 Wildly committed

We shape the future – with the OBO bees in Bösperde and the social project AAP in Belgium

## 18 Environmental Product Declarations

Environmental awareness is growing – both in society and in the construction sector

## 20 Connectable junction boxes

They ensure efficient routing of electrical lines and cables in floors, ceilings and walls

## 22 50 years of surge protection

For over 50 years, we have been developing surge protection systems for virtually every installation environment

## 24 Customers

Whether a modern office tower or a traditional opera house – OBO contributes to optimised working environments and reliable safety technology with well-thought-out installations

## 26 Trade fair review and preview

Looking back at the trade fairs: BAU 2025 in Munich, elektrotechnik Dortmund, Solar Solutions Amsterdam, eltefa Stuttgart

## 28 New OBO website

Smarter, faster, more connected: The new OBO website offers professionals an optimised digital experience

## 30 OBO Marketing Workshop

Three days full of connections, new ideas and practical workshops reinforce the collaboration of the marketing teams around the world

## 31 OBO Inside | Personnel news

Welcome to the OBO family: We are pleased to introduce our new colleagues!

## 32 OBO India comes to visit

The OBO India Sales Management team visited Menden and Bugyi

## 33 Innovations in production

Automatic fastening process ensures more efficient workflows

## 34 OBO Academy

Looking to expand your knowledge? Here you will find the current training programmes offered by the OBO Academy!

# Diverse challenges in the world: OBO responds with consistency

Looking at the current global political situation and geopolitical developments, you may not feel very optimistic. International conflicts and economic uncertainties create unrest and have an effect on business activities, location decisions and supply chains. In Germany, a new government has been elected and we are looking forward to seeing if it will now provide the right impetus and make good decisions with speed and with foresight.

“Even in challenging times,  
OBO is committed  
to consistency.”

But despite everything, at OBO we are confident about the future and are ideally positioned for both current and future challenges. This enables us – even in these uncertain times – to invest in the future of our corporate group and our international sites. One focus for us is the topic of sustainability, because we want to take responsibility for future generations.

The following pages detail the measures and investments we will focus on in the future: In addition to our 50-million-euro project to invest in the expansion of the Menden site with a new, state-of-the-art logistics centre, we are also investing in other international OBO sites in Croatia, Switzerland, the US and Belgium. Last year, we invested 60 million euros in a new central logistics system at our largest production site in Bugyi, Hungary, for supplying the southern and Eastern European market.

We were able to take a few more steps on the journey towards a more sustainable future in the last few months, with both small and large initiatives. We are proud that we can calculate and verify the CO<sub>2</sub> footprint for more and more OBO products, and that we can meet the increasing requirements and growing environmental awareness of the construction industry with EPDs (Environmental Product Declarations). Environmentally friendly packaging and shipping solutions ensure greater sustainability in logistics at OBO. There was some wild support for our site

in Bösperde, as at the beginning of March we welcomed three bee colonies, which went straight to work and started producing the first batch of OBO honey.

As you can see, even in challenging times, OBO is committed to consistency with our core values of tradition and innovation – today and in the future.

I hope you enjoy reading this issue of OBO Blick.



**Christoph Palausch**  
OBO Managing Director





# OBO invests **50 million euros** in the Menden site



## A new logistics centre with state-of-the-art technology is being built right next to the Metal Competence Centre

Anyone driving through the Hüingsen district in Menden can hardly miss it: OBO is building a new logistics centre right next to the Metal Competence Centre on an area the size of four football pitches. With the acquisition of the site, OBO has fulfilled a long-cherished wish. As we continue to grow, we have been planning to expand our logistics space and the Metal Competence Centre for some time. "Once again, our countercyclical investment strategy has proved worthwhile. The new logistics centre, with a total investment volume of

50 million euros, state-of-the-art technology and connected production, is taking shape more and more. After an impressively short construction period of just 6 months, we expect it to be ready for occupancy by the end of June," says Ulrich Bettermann, Chairman of the Board of Directors of the OBO Bettermann Group. "The close proximity to our Metal Competence Centre will ensure short transport routes, which will also benefit the environment. In any case, the new logistics hall will be sustainable and future-oriented. A large part of the power

supply will be provided by solar power obtained from our company's own photovoltaic system, which will also be extended once again on the new building. In the logistics centre itself, driverless electric transport systems will roll through the halls."

## Long-term security of supply for OBO's international sites

The new logistics centre comprises a storage area of around 23,000 m<sup>2</sup> as well as an office and administration wing. This expansion will ensure long-term delivery capability and goods handling for both the national and international sites of the OBO Group, as the

additional logistics and storage space will enable the fastest possible service for international markets. Various high-tech storage systems are being used in the different halls of the new logistics centre. To optimise the loading process, large loading ramps are planned on the

entire north-east side as well as in the area of the south-east side.

## Menden is not the only site where OBO is investing

In addition to the new central warehouse in Menden, last year OBO invested 60 million euros in a new central logistics system at its largest production site in Bugyi, near Budapest, in Hungary, for supplying the southern and Eastern European market. This means that OBO is even better equipped for the future in

terms of short, sustainable transport routes and fast supply to customers, in order to come a step closer to the company's long-term goal of achieving a second billion euros in turnover. As well as the major investments in logistics infrastructure, OBO will be investing an additional amount in the hundreds of

millions in the renewal and expansion of machines and systems in 2025, thereby sending a positive signal for the future of the company even in these difficult political and economic times.

## Optimal preparation ensures a record construction time of only 6 months

OBO put a lot of energy into the preliminary planning and development of the construction site. And the work has paid off: Up until the general contractor was awarded the contract, a planning team was tasked with driving the preliminary

planning to such an extent that the construction time could be optimised to just 6 months. Even the complex civil engineering work was also awarded separately by OBO, in order to be able to hand over an optimised construction site

to the contractor at the start of 2025. The contractor described the construction site as a "red carpet" and found ideal conditions for completing the construction in winter in such a short time.

## PV system expansion

The roof area of our new building complex will also be optimally and sustainably utilised to expand our own photovoltaic system. Naturally, we are using our innovative Magic PV mounting systems. We are currently running a PV system with a total output of 2.3 MW across an area of 40,000 m<sup>2</sup>. The solar power generated in this way covers up to 40% of the electricity consumption for

production and administration at the Metal Competence Centre. Certified green energy is used for the remaining 60%. The space on the flat roof of the new logistics centre is optimally used, taking into consideration the minimum distances to smoke and heat extraction systems, skylights and maintenance corridors. This allowed us to plan the largest possible number of PV modules.

Through this system expansion, OBO was able to significantly increase the proportion of self-generated electricity. This means that the products that are produced at our Menden site, such as the cable support systems, can be manufactured even more sustainably.





## OBO invests in the expansion of logistics space in Croatia

We have invested in the modernisation of our logistics warehouse at our Croatian site. Before this renovation project, the available space was 1,200 m<sup>2</sup>. But the space became too small, thanks to steadily increasing numbers of orders, especially as the logistics warehouse supplies wholesalers from both Croatia and Slovenia. Therefore, we expanded the warehouse space by 1,000 m<sup>2</sup> with a new hall.

As part of the modernisation, the industrial area was rebuilt and the existing electrical, water and gas installations were relocated, as they had to be adapted to the new logistics complex – made up of the existing warehouse and the newly

constructed hall. In addition, the new hall was equipped with shelving and a forklift, and other equipment required for seamless logistics operations was purchased.

OBO has been active in Croatia and Slovenia since 2006. Both markets will continue to be supplied by the logistics warehouse in Croatia, which now offers optimal conditions for quickly and reliably fulfilling all customer requests – just as our customers have come to expect from OBO.



## New administration and logistics hall for Bettermann AG

The Bettermann AG site in Switzerland has steadily increased its output of goods since 2018. A glance at the figures proves this point: From around 4,500 tonnes in 2017, the amount of goods increased to 6,700 tonnes in 2023. This meant that the space would soon no longer be sufficient, and Bettermann AG turned its focus to optimised warehousing: A new logistics hall was the solution.

### More space for logistics and administration

The new building, with an area of 2,100 m<sup>2</sup>, was completed in May. Together with the existing buildings, Bettermann AG now has a total area of 7,000 m<sup>2</sup> at its disposal. The administration department also moved into new premises, as an extra 280 m<sup>2</sup> of office space was created in the new building. The investment amounted to around 12.5 million euros.

### PV supplies injection moulding machines with solar power

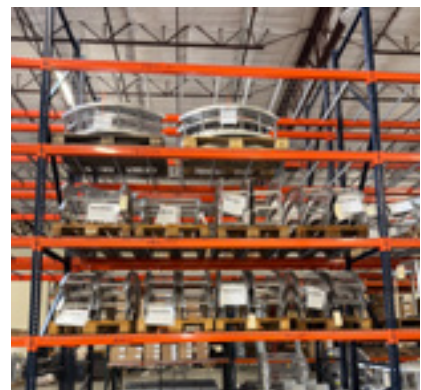
One of the company's own PV systems will be put into operation on the new building as well as on an existing building for plastic and injection moulding production. The solar power that it generates can be used to cover a large proportion of the electricity requirements for the injection moulding machines, in an environmentally friendly manner. In another step towards sustainability, the existing oil heating system has been replaced with a heat pump. This saves around 30,000 litres of heating oil that were required each winter.



## Chalfant builds connections for the future expansion of the warehousing space

This year Chalfant celebrates its 80th anniversary. But instead of looking back, our colleagues in the USA are using their anniversary year to build connections for the future and expand their warehousing space. Since the move in 2020 to the current site in Avon, Ohio, Chalfant has recorded considerable growth. To accommodate this growth, the site in Avon has been expanded with a second logistics warehouse. The additional space of 5,062 m<sup>2</sup> creates the basis for an increase in production, further improvement in organisation and more optimisation of shipping, for both Chalfant and OBO products.

But the Chalfant site in Avon is not the only one that is growing. The logistics warehouse in Houston, Texas, is also being expanded. This will mean that Chalfant is even better equipped to supply the Gulf region. Enquiries are increasing in this area in particular, and Chalfant is pleased to be able to meet growing customer requirements with these additional resources. Through the expansions of the sites in Ohio and Texas, Chalfant customers can continue to rely on the seamless and reliable supply of the highest-quality products.



## OBO Belgium celebrates the opening of a new site

OBO Bettermann Belgium was founded in 1997 in Aartselaar (Antwerp). After 25 years of continuous growth, the warehousing area there became too small to guarantee the usual delivery times and availability of goods. The office space was also no longer sufficient. In order to continuously improve service for our customers, new employees were hired constantly, which meant that OBO Belgium simply outgrew the premises in Antwerp. Therefore, in 2023 the search began for a larger building, and a suitable site was found in Dendermonde. The building needed to be comprehensively renovated, which took around a year but brought numerous benefits:

- A building twice the size
- Warehousing capacity doubled to 6,000 m<sup>2</sup>
- Modern office space
- The opportunity to offer even better service to our customers

In April 2024, OBO Belgium moved and continued the renovation work. In addition to a new showroom and premises for the OBO Academy, an OBO Bar was also created at the Dendermonde site for networking with customers and partners. Exactly one year later, on 3 April 2025, all the renovation work was completed and the new site was officially opened with a big celebration.



# OBO BlackLine

## Premium solutions for surface-mounted installations

Elegant, refined, emotive: Black has been a trend in architecture for many years. Whether in residential or commercial construction – there is a strong demand in all areas. At the same time, surface-mounted installations are experiencing a revival as part of the trend for an industrial style. Originating from the 1960s art scene in New York and London, the industrial style is characterised by the raw aesthetics of warehouses and factories. With its BlackLine, OBO presents a product range that meets both trends: system solutions for surface-mounted installations, now available in stylish black. But OBO BlackLine offers more than just numerous possibilities for defining a memorable, modern style – it also follows the concept of circular construction.

The portfolio features cable support, cable routing, and connection and fastening systems, as well as other items. Whether retro or industrial style – our products from the OBO BlackLine range enable cohesive design statements that integrate seamlessly into modern architecture, increasing the value of the properties.



*See the  
OBO BlackLine range here.*





# SIMPLY THE BLACK.





# Food and beverage industry

OBO provides safety and hygiene for production, conveyor technology and storage

Virtually no other industry requires such a high standard of hygiene than the food and beverage industry. Electrical infrastructure in these environments requires products that meet these strict hygiene standards while also being easy to handle. The manufacture of foods and beverages is divided up into three main areas: production, conveyor technology and storage. With a complete system, OBO offers just the right solution for each one.

## Overview of the benefits of the OBO complete solution

- **Everything from a single source:** With our complete solution, the individual system components interlink perfectly
- **Service@OBO:** We can support your project with tailor-made support – from the initial planning stage through to finished mounting
- **Years of experience and competence from numerous projects:** Benefit from our expert knowledge
- OBO is a member of Warenzeichenverband Edelstahl Rostfrei e.V. (WZV) and carries the quality seal “Rustproof stainless steel”.



## Production

Stainless steel is a particularly sought-after material in the food and beverage industry. This is especially true for companies that actually produce items themselves, such as dairies and creameries. Not only is stainless steel easy to clean and resistant to bacteria and other germs, it is also food-neutral, meaning that the flavour and appearance of the food remain unchanged.

All areas and components used in food and beverage production are cleaned regularly with a steam cleaner to ensure compliance with strict hygiene standards. Open systems and smooth surfaces without sharp edges support the cleaning process and prevent any build-up from forming.

### OBO solutions for production areas:

- Large range of stainless steel mesh cable trays
- Stainless steel cable ties – easy to clean
- Triangular mesh cable trays for luminaire suspension



## Conveyor system

Conveyor technology is a crucial component of the production process. Avoiding contact between food and product surfaces is a top priority. Rounded edges, smooth surfaces and easy-to-clean shapes are therefore all necessary to avoid contamination and the build-up of impurities.

### OBO solutions for conveyor technology:

- Stainless steel cable support and mesh cable tray systems, such as the innovative OBO Magic systems with screwless plug-in connection
- Cable routing systems in the area of conveyor systems



## Storage

Proper storage is key to ensuring the quality and safety of food products. This also defines the requirements for electrical installation in this area. Due to the prevailing humidity in this area, hot-dip galvanised materials are often used. Cable routing is carried out directly on the wall and is implemented with spacers.

### OBO solutions for food storage:

- Mesh cable trays with spacers
- Cable trays and cable ladders in various versions
- Hot-dip galvanised cable support systems and fastening materials





# Planning for a bright future

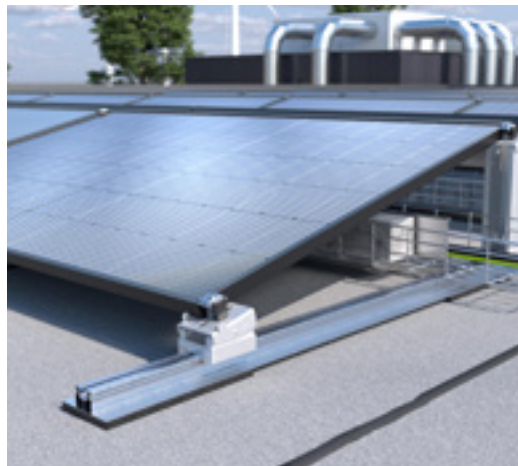
## Configure Magic PV systems with OBO Construct

Years of experience and expertise meet a complete system for almost any electrical requirements of a PV system: That is the OBO photovoltaic system solution. However, this includes not only reliable solutions for lightning and surge protection, cable management and fire protection for PV systems, the Magic PV Solution also offers innovative systems for mounting PV modules. Our popular OBO Construct product configurator has a PV planning tool to quickly and easily find and configure the ideal mounting system for individual requirements and application situations.

### Magic PV Flat Basic and Magic PV Flat Pro – innovative module mounting on flat roofs

PV systems positioned on flat roofs have a decisive advantage, as the PV modules can be mounted independently of a given roof orientation. The OBO Magic PV Flat Basic system provides even more benefits with its streamlined product range that offers the highest levels of flexibility. The mounting system for flat-roof systems is durable, highly resilient and – thanks to the Magic click connection – can be installed quickly and easily without screws or other tools. The flexible ridge gap permits infinitely variable system design. In addition, the Magic PV Flat Basic is characterised by an integrated system for cable routing and simultaneous ballasting.

Thanks to the Magic technology, the Magic PV Flat Pro system for flat-roof systems is also installed without the need for screws or tools. High-quality materials and system components with a high maximum load-bearing capacity form the basis for a long-lasting installation system. A cable routing system with mesh cable trays can also be integrated. The UniBase ballast system provides variable weighting of the overall system by using rectangular blocks – even possible at any time after the installation.



### Magic PV Pitch – our solution for pitched-roof systems

The roof-hook solution of the Magic PV Pitch system for pitched roofs offers maximum flexibility. Not only can it be mounted on all standard pitched-roof types with tiled roofing, it can also be adjusted continuously and down to the millimetre in all directions at any time. The universal clamp functions simultaneously as an intermediate or end clamp, covering a clamping range of 30–50 mm. This allows for the easy fitting of all commercially available PV modules.

## Smart solar planning: The OBO Construct PV tool

Discover the future of PV planning: The OBO Construct tool for the Magic PV Solution makes it easier than ever to plan your mounting system. The planning tool is intuitive and easy to use, and enables quick planning processes. Step by step, you will find the right OBO PV mounting system for your project – tailored to your specific needs and requirements.

It is as easy as this: Create your PV project online, edit it and save your plan. The OBO Construct tool automatically calculates the required quantity of the respective components and generates a planning-based substructure and module planning graphic. This can simply be downloaded, as well as invitations to tender and various documents for the static calculation of our mounting construction in different file formats.



### You can rely on these advantages when planning:

- Explained step by step
- Intuitive to use
- The right PV mounting system in just a few clicks
- Download option for static calculation documentation
- Seamless user experience thanks to Elbridge: The configured products can easily be transferred to online wholesaler shops
- No licence or user fees



# CO<sub>2</sub> footprint for more than 29,000 OBO products

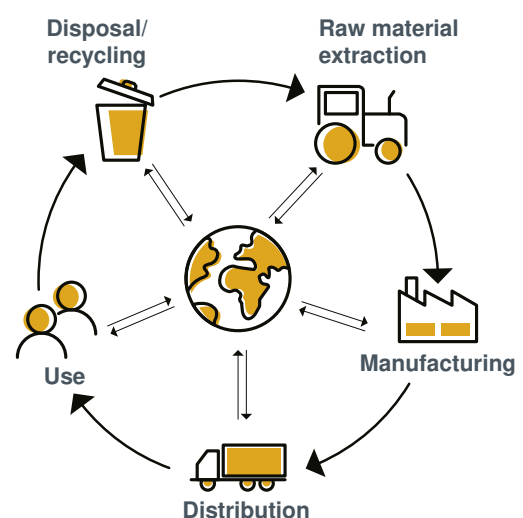
## More transparency on the path to a more sustainable future

The environmental impact of products can be determined using a product's CO<sub>2</sub> footprint, also known as the product carbon footprint (PCF). This includes the sum of all greenhouse gas emissions of a product over its entire life cycle (cradle to grave). These include:

- Raw materials used
- Manufacturing methods
- Transport
- Use
- Disposal

We calculate the CO<sub>2</sub> footprint of an increasing number of products based on the cradle-to-gate principle. This approach – the market standard applied by manufacturers – considers the life cycle of a product from the extraction of raw materials to the point at which the product leaves the factory gate. This allows us to focus specifically on the processes that we can influence. We analyse and then optimise the environmental impact of these processes.

Currently, we provide this information via our online catalogue for the complete German product range with over 29,000 items. We will continue to increase this amount as we do the same for the international product range. This means that we can offer our customers a transparent and reliable information base.





A product's CO<sub>2</sub> footprint can be reduced by various measures directly at the manufacturing stage, for example through using green energy and sustainable raw materials, increasing the proportion of recycled materials in production or through short delivery routes. Measures that we are already implementing at OBO.

## Green energy

OBO began the systematic conversion to 100% regeneratively generated natural electricity at the Menden site back in 2012. By choosing power from renewable sources we are reducing CO<sub>2</sub> emissions by 9,800 tonnes per year. OBO took another important step towards a more sustainable future in September 2023 with the commissioning of a photovoltaic system with a total output of 2.3 MW at the Menden site. The energy yielded by the PV system covers up to 60% of the electricity consumption for production and administration at the Metal Competence Centre. The remaining 40% of the power consumption is covered entirely by the aforementioned green energy. We are also working on renewable energy for our international sites: OBO Finland uses geothermal energy for both heating and cooling its sales and logistics sites. PV systems are already in operation on three company buildings at our Hungarian site in Bugyi, and more are to follow. They make it possible to reduce the site's CO<sub>2</sub> emissions directly. The rest of the power supply is also obtained from green energy.

## Short delivery routes

In Germany alone, we have around 38,000 m<sup>2</sup> at our disposal. With respect to sustainability, this means short delivery routes. This helps us to reduce CO<sub>2</sub> emissions and to minimise the impact of our delivery traffic on the environment.



## Green transport: OBO receives CO<sub>2</sub> certificate from LKW WALTER

Just like at OBO, sustainability and environmental protection have been practised values at LKW WALTER for decades. Today, LKW WALTER is one of the leading providers of environmentally friendly transport solutions in Europe – with a CO<sub>2</sub> reduction of over 340,000 tonnes per year – and is therefore a good example of how carefully we at OBO select our partners for a sustainable supply chain.

Last year, in cooperation with LKW WALTER, we put 2,541 trucks loaded with OBO products on the road. Some 736 of these trucks were intermodal transports, which is one option for “green transport”. This corresponds to 29% of the volume moved with our partner LKW WALTER. Together with LKW

WALTER, OBO Hungary has transported a total of 498 loads, 298 of them in accordance with green transport. That's 47.8%.

Among other things, green transport solutions stand for the increased use of transport partners who are driving forward the expansion of combined road and rail transport and are committed to shifting road transport to rail and sea. By using green transport solutions, we were able to reduce CO<sub>2</sub> emissions by 671,242 kg in Germany and 224,844 kg in Hungary last year together with LKW WALTER. This is a remarkable amount and a great success on our way to a more sustainable future.

# OBO logistics are focussed on the subject of sustainability



For our OBO products to reach our customers safely, the right packaging and shipping materials must be used. We also have a clear focus on the subject of sustainability and implement measures to take care of resources.

## These include:

- Sustainable shipping materials
- Environmentally friendly packaging solutions
- Green transport solutions

## Sustainable shipping materials

We make sure that the shipping materials we use decompose quickly and easily. For example, we use biodegradable shipping pouches, reusable packaging, cardboard packaging without plastic inlays and filler made of recycled card. If we use packaging with windows, we use only those made from recycled materials.



## Environmentally friendly packaging solutions

By using sustainable shrink-wrap for packaging our T series, we will reduce our annual CO<sub>2</sub> emissions from 20.7 t to 13.7 tonnes.

At our Hungarian site in Bugyi, we have switched our wrapping film used for packaging from a variant with a thickness of 15 µm to a type with a thickness of 12 µm. Wrapping film ensures that packages are reliably protected against humidity, contamination and dust. Pallets loaded with packages are wrapped with the film. This secures and stabilises them for transport. Through the shift to a thinner variant with better tensioning properties, we now need significantly less film, which means we will use 3 tonnes less plastic each year for hypothetically the same number of pallets, based on the annual consumption quantities. This means a reduction in emissions of just under 8 tonnes of CO<sub>2</sub> per year.





# The OBO bees are here

We are actively committed to a diverse ecosystem

There's a buzz in the air in Böisperde – the OBO bees are here! In March, three beehives were set up at the OBO site in Böisperde. Each hive is home to 60,000–80,000 bees, with one queen bee in each. That means we also welcomed three queens. Depending on how industrious the bees are, more hives will be added and their new home will be further expanded.

The bees have found an ideal environment in Böisperde. Sunny and right on the edge of a field, the area is ideal for excursions to nearby flowers and plants. The site had previously been inspected by the Andree apiary from Neuenrade, to make sure that it was suitable for the bees. The beekeeper also provides professional care for our black and yellow colleagues. For the first three to four weeks, they have time to settle in and get used to the new environment, before the beekeeper starts

checking on them every fortnight or so. During this check, the beekeeper looks to see how the honey harvest is shaping up. The honey that the bees produce here will be given as an exclusive gift to our customers. The honey is regional and will be an individualised flavour of the nature in the area – OBO in a jar, so to speak! The beekeeper expects the first batch of OBO honey after the rapeseed season in June or July.

The OBO beehives are a further step towards a more sustainable future, as these small insects play an important part in preserving biodiversity, the ecosystem and agriculture. Giving them a home means that we are making an important contribution to the environment directly at our premises.



## OBO Belgium supports social project AAP

"Building Connections" is not just a company slogan at OBO, it is a principle that we live by. We establish connections: not only between products and systems for safe electrical infrastructure, but also between people – and now between people and animals. As part of our commitment to a more sustainable and inclusive future, OBO Belgium is supporting VZW AAP (Animal Assisted Projects). The organisation focuses on the connection between humans and animals, taking therapy animals to places such as care and retirement homes or therapy facilities.

AAP is dedicated to the mutual care and solidarity between animals and humans. A comforting visit to a retirement home, for example, fosters the social interaction between the animal and resident. This helps the residents to overcome loneliness, and playing with the animals gets them moving in a natural and playful way, thus promoting mobility. Animals also have a beneficial effect on people's well-being in therapeutic facilities. Research on the physical, psychological and social effects of animal-assisted interventions shows that patting an animal has many positive effects. Touching the soft fur reduces stress and releases the so-called "cuddle hormone" oxytocin. A ray of light in dark moments.







# Environmental Product Declarations for OBO cable support systems

Environmental awareness is growing – both in society and in the construction sector. Evidence of sustainable production processes by architects and planners frequently serve as the decision-making basis for the selection of construction products. This shows that there is an increasing demand for reliable information on potential environmental impacts of products.

This requirement is fulfilled by Environmental Product Declarations, or EPDs for short. The entire cable support system product range from OBO – with its numerous cable tray, mesh cable tray, cable ladder, wide span and mounting systems – carry these Environmental Product Declarations. We are proud to have taken another important step towards a more sustainable future, and are already planning the EPDs for further product groups.

## Life-cycle assessment parameters and product-related environmental impacts

As a standardised, fact-based source of information for the evaluation of product sustainability, EPDs represent a binding, universally valid basis. Whether architects, planners, engineers, clients, facility managers or auditors – any interested party can use the publicly available EPDs to obtain an overview of life-cycle values and any product-related points of environmental impact.

### A look at the standards

The Environmental Product Declarations are based on the international standards ISO 14025:2011 and EN 15804:2012+A2:2019. The General Guideline for the Preparation of Type III Environmental Product Declarations also applies. Life-cycle values are used to create the EPDs and are based on the DIN EN ISO 14040 and 14044 standards. The verified Environmental Product Declarations apply to the named products and are valid for five years.



### An important reference point for architects and planners

EPDs not only allow the life-cycle assessment and evaluation of buildings, but also the integral planning. Even in the drafting phase, architects and technical planners use EPDs to compare different components, construction methods and options, and can thus select the ideal combination of construction products for each individual building. Thanks to EPDs for materials, construction products and construction components, the ecological aspect can now be included in the sustainability evaluation of structures. This is primarily about the basic information for the evaluation of the ecological building quality. The comprehensive and detailed life-cycle data and information contained in the EPDs are summarised in a standardised format over just a few pages. For this purpose, the manufacturing and disposal phases are taken into account in a life-cycle assessment.

#### Direct access

View and download the EPDs for OBO cable support systems:



## The new OBO Sustainability Report is here

We are pleased to have recently published our second Sustainability Report. As we take a look back on 2023, we inform readers about the steps we have already taken on our way to a more sustainable future. We have already implemented numerous projects related to ecological and economic sustainability. The Sustainability Report is a transparent look at all the relevant facts, figures and data on sustainability at OBO, on the standards that guide us, and our vision and mission.

We see sustainable action as a continuous process. Our Sustainability Report is a snapshot of what we have already achieved. In the coming months and years, we will continue to strive to make our company even more sustainable, and to design an even more sustainable future together with our customers, partners and employees – step by step. We would be delighted if you would accompany us on this journey.

You can download the current OBO Sustainability Report here:



# Connectable junction boxes from OBO



Simple.  
Quick.  
Flexible.

OBO's connectable junction boxes ensure efficient routing of electrical lines and cables in floors, ceilings and walls. They enable complete wiring more quickly than ever. With their innovative plug-in system and their flexible modular principle, they more than meet the installation requirements of current construction projects. Another benefit is that the volume within the boxes has been increased. This provides for more installation space, uncomplicated work in the boxes and simplified wiring later on. Comprehensive installation requirements of current construction projects can be met easily as a result. The optimised portfolio is rounded off with extensive accessories, such as the variable fastening element for cable trays.

## The advantages of connectable OBO junction boxes at a glance:

- Quicker installation thanks to the plug-in principle
- Flexible modular principle
- Horizontal and vertical fastening are both possible
- Versatile and modular in applications
- Pre-wired covers ensure simple connection
- Lever terminal blocks for direct wiring



## Versatile in its applications

The portfolio of OBO connectable junction boxes includes a total of around 20 different connectable cover concepts. Both unequipped variants and equipped, pre-wired variants with Wieland and Wago plug-in systems are available. The different configurations are suited to the installation requirements of a wide range of applications, and can be used, for example, in industrial halls and buildings, and for flexible workplace installations in office buildings, schools, hospitals, sports stadiums or hotels.



# On the safe side for over 50 years with OBO



## Our surge protection systems offer high quality at a fair price

For over 50 years, we at OBO have been developing surge protection systems for virtually every installation environment. Our spirit of innovation, expertise and experience from many projects worldwide can be found in all of these systems. Be on the safe side with OBO. As a complete system provider, we offer a surge protection portfolio featuring components that work together perfectly, complemented by our extensive Service@OBO service offering. Effectively protect buildings and systems with a wide range of requirements against surge damage. We stand for tested brand quality, expertise and competitive prices. OBO surge protection systems offer a 5-year guarantee.

## Our reliable solutions against surge voltages

In the last five decades, OBO Bettermann has developed a wide range of surge arresters that can be used to protect buildings and systems with a large variety of requirements. This includes, for example, the V50 combination arrester type 1+2, the surge arrester V20 type 2 and the V10 Compact 2.0, as well as the MCF-NAR combination arrester. The OBO surge arresters reliably prevent surge voltages through lightning events and switching actions, which can damage electronic devices or data cables.

## Well protected against surge voltages in all industries

The OBO surge protection system portfolio also includes special solutions for measurement and control technology, data and information technology, potentially explosive atmospheres and photovoltaic systems. For comprehensive protection of photovoltaic systems, OBO offers generator junction boxes preassembled with lightning and surge protection, among other things.





## MCF NAR combination arresters

### (T1+T2):

Lightning and surge protection in the mains-side connection compartment

- Qualified for use in the pre-meter area according to VDE-AR-N 4100
- Installed in the lower connection compartment, it provides reliable protection against surge voltages directly at the supply point
- Installation on the 40 mm busbar system
- Simple and time-saving mounting



### V50:

Protection for commercial and residential buildings

- Lightning current discharge capacity of 50 kA (12.5 A/ pin)
- Suitable for lightning protection equipotential bonding according to VDE 0185-305 (IEC 62305) and lightning protection classes III–V
- Installation at the supply point of the building with system protection up to 160 A without a separate back-up fuse
- Typical areas of use: offices, commercial real estate and residential housing with an external lightning protection system or overhead line supply



## Surge protective device V20:

Our universal masterpiece

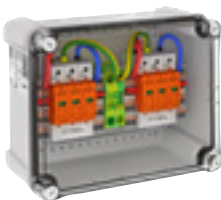
- May be used in buildings without an external lightning protection system in the main distributor (post-meter area)
- Other possible areas of use: sub-distributors and switch cabinets
- With the total arresting capacity of 60 kA (20/40 kA/pin), they are also suitable for use in systems with increased safety requirements according to DIN VDE 0100-543



## V10 Compact 2.0:

Compact surge protection for residential buildings

- Compact surge protective device type 2+3 has an arresting capacity of up to 60 kA (8/20) in total
- Integrated 3+1 solution for TN and TT network systems with a 45 mm module width
- High-performance varistor systems
- Suitable for use in main and sub-distributors (the former only in the post-meter area and in systems without external lightning protection)

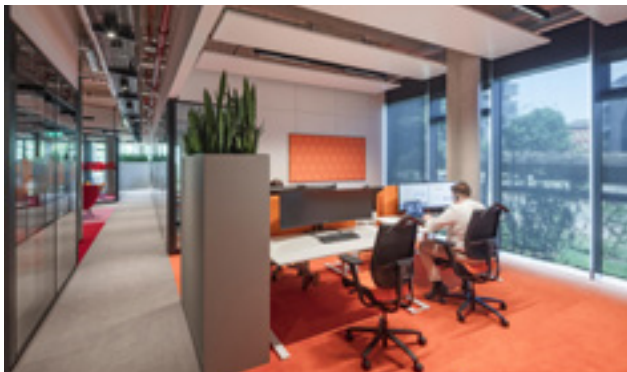


## OBO generator connection boxes

- Preassembled with lightning and surge protection
- For protection of the DC input of the PV inverter
- UV-resistant container with a high protection class of IP66 and a material strength of IK07
- Especially practical: cables are connected quickly and safely using terminals with push-in technology



Credits: Photo: HGEsch



## Eclipse office campus in Düsseldorf

The impressive Eclipse office tower in Düsseldorf was completed in 2022. The 16-storey building on Kennedydamm, designed by HPP Architekten in collaboration with UNStudio on behalf of the developer, soars to the sky with its eye-catching glass façade. The Eclipse encompasses 30,000 m<sup>2</sup> of modern office space with around 1,200 workstations.

Due to the location of the Eclipse, which is surrounded by two intersecting main roads with high noise levels outside, the common areas for users of the office tower are located mainly inside the building. The atriums and light wells for the heart of the building and are located on several floors. In these atriums, the employees find a wide variety of common areas, such as a cafeteria or an events space, which are also clearly visible in the façade from the outside. The atriums connect where the clear window areas in the glass façade can be seen, forming a "vertical campus" that extends to the rooftop terrace with sweeping views over the city. "The Eclipse acts as a mediator, creating an urban link between the local neighbourhood and the working environment," says Werner Sübai, Senior Partner at HPP Architekten. Sustainability played an important part in the construction of this building.

OBO BlackLine was incorporated in this project due to its versatility and elegance. BlackLine is the OBO system solution for black surface-mounted installations. It offers not only numerous options to define a memorable, modern style, it also scores highly in terms of sustainability and environmental compatibility. This is because all components of the OBO BlackLine products facilitate dismantling and enable efficient recycling. This means they comply with the concept of circular construction. The product range includes device installation and cable trunking, underfloor solutions and cable trays. Products from the BlackLine range were installed on several levels in Eclipse, and now blend seamlessly into the overall design of the building.





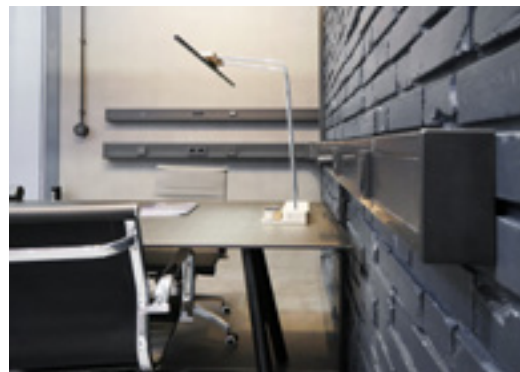
# Showstopping OBO fire protection solutions in historic building



## Leipzig Opera

The opera house in the centre of Leipzig was opened in 1960. The building, designed in the neoclassical style, comprises seven storeys, a stage tower with fly floor and the basement floors with the stage machinery. Various renovation works are gradually being carried out in the grand building, such as the renewal of the stage management system. This system is used for communication in opera houses and theatres. It is not visible to patrons, but must function absolutely reliably and seamlessly, in order to ensure that everything runs smoothly on stage. Among other things, the stage management system monitors the scenes on the stage and sends cues to the various departments and actors when it is time for them to take action.

When it comes to the reliable functioning of electrical systems, OBO are the experts, and this project was no exception: A total of 620 metres of our PLM fire protection ducts was installed in the escape and rescue routes of the opera house, along with a wide range of fittings. The PLM fire protection ducts boast certified quality and simple installation. But at OBO, we not only offer reliable electrical installation solutions for almost every application environment, we also support customers with service in each phase of the project – from the initial consultation through to the aftersales phase. This was also the case at Leipzig Opera, where we supported the renovation with expert advice on-site and liaising with the various trades. Thanks to the proximity to the OBO regional warehouse in Delitzsch, we were able to guarantee fast delivery of our products.



## It was great to see you!

### Trade fair review: BAU 2025, elektrotechnik, Solar Solutions, eltefa

The first trade fairs of the year took place in recent weeks and months, and we had the opportunity to meet some of you in person, have a chat and present our innovations and new products. A review:

#### BAU 2025:

In January, Munich was once again the hotspot for the construction industry. At BAU, visitors had five days to experience the future of construction, gather more information and make contacts. Of course, a visit to the OBO trade fair stand was the best place to do this, where there was plenty of inspiration for construction projects. We used OBO BlackLine to present our comprehensive system solution for black surface-mounted installations (see pages 8 and 24) to a large audience for the first time. We thought that BAU offered the ideal forum for this, and the overwhelming positive feedback proved us right.

#### Solar Solutions Amsterdam:

Solar Solutions Amsterdam is the largest trade fair for professionals in the renewable energy industry in the Netherlands. Over 200 exhibitors and more than 12,500 visitors came together to be inspired by the latest products and innovations in the solar industry. Our complete solution for PV systems took centre stage at our trade fair stand. Whether Magic PV Solution or generator connection boxes with lightning and surge protection – we have everything you need to play an active role in shaping the energy transition.

#### elektrotechnik:

In 2025, elektrotechnik once again drew decision makers from the electrical industry to Dortmund. The trade fair offers architects, planners, energy consultants and energy suppliers the ideal platform for finding out more about innovative technologies and exchanging ideas. The focus is on future-oriented topics relating to construction technology, energy technology and industrial technology. At elektrotechnik, we had the opportunity to hold many interesting conversations, make valuable contacts and present our innovative new products, such as the Delta-Push® push-fit plug and the new OBO Construct PV configurator.

#### eltefa:

Andre Suntrup, Regional Sales Manager, summarises eltefa 2025: "The eltefa fair in Stuttgart is one of the most important regional trade fairs in Germany for OBO. One thing is for certain: we can't and won't miss it. The high number of all our relevant target groups, compressed into three very successful and well-organised days, makes eltefa something special for us every time. We are already looking forward to the next eltefa in 2027."




# Want to meet us in person?

Absolutely! Here are the dates of our next trade fair stands:


## ARCHITECT @WORK


 Hamburg

 17–18 September

Architect@Work is opening its doors in Hamburg for the 4th time. Product innovations meet a comprehensive lecture program and exhibitions on the subject of architecture. This makes it the meeting place for planners and architects. Our OBO exhibition stand also invites you to be inspired - for example by our OKA open trunking system, which provides flexibility and safety for cable routing in screed. We are looking forward to meet you there!

## efa:ON Fachmesse für Elektro-, Gebäude- und Lichttechnik


 Leipzig

 23–25 September

efa:ON is the only trade fair for electrical, building and lighting technology for central Germany and the neighbouring regions. This is where manufacturers and service providers meet professionals from the trade, industrial, commercial and energy supply sectors to exchange ideas. Of course, OBO will be there. Will we see you there? Visit our trade fair stand and be inspired by the highlights from our product portfolio.

## sps smart production solutions

 Nuremberg

 25–27 November

SPS is the highlight event in the automation industry and covers the complete spectrum of smart and digital automation with its unique concept. SPS presents visitors with both current developments and the vision of a fully digitalised industrial world. At the OBO trade fair stand, you will find everything you need to make this vision a reality, including lightning and surge protection systems, solutions for switch cabinets and insights into our digital tools, OBO Construct and the myOBO app.

## Well informed. All the time. From anywhere.

### Experience our trade fair highlights for yourself!

Our social media channels provide live reports from our events and keep you up to date with all the latest news from OBO.

### Your advantages at a glance:

- Fresh insights direct from the trade fair stand
- Exclusive information on products, trends and highlights
- Videos, photos and stories in real time
- A direct line to our team – comment, like, share!
- Never miss an update – follow us and stay informed

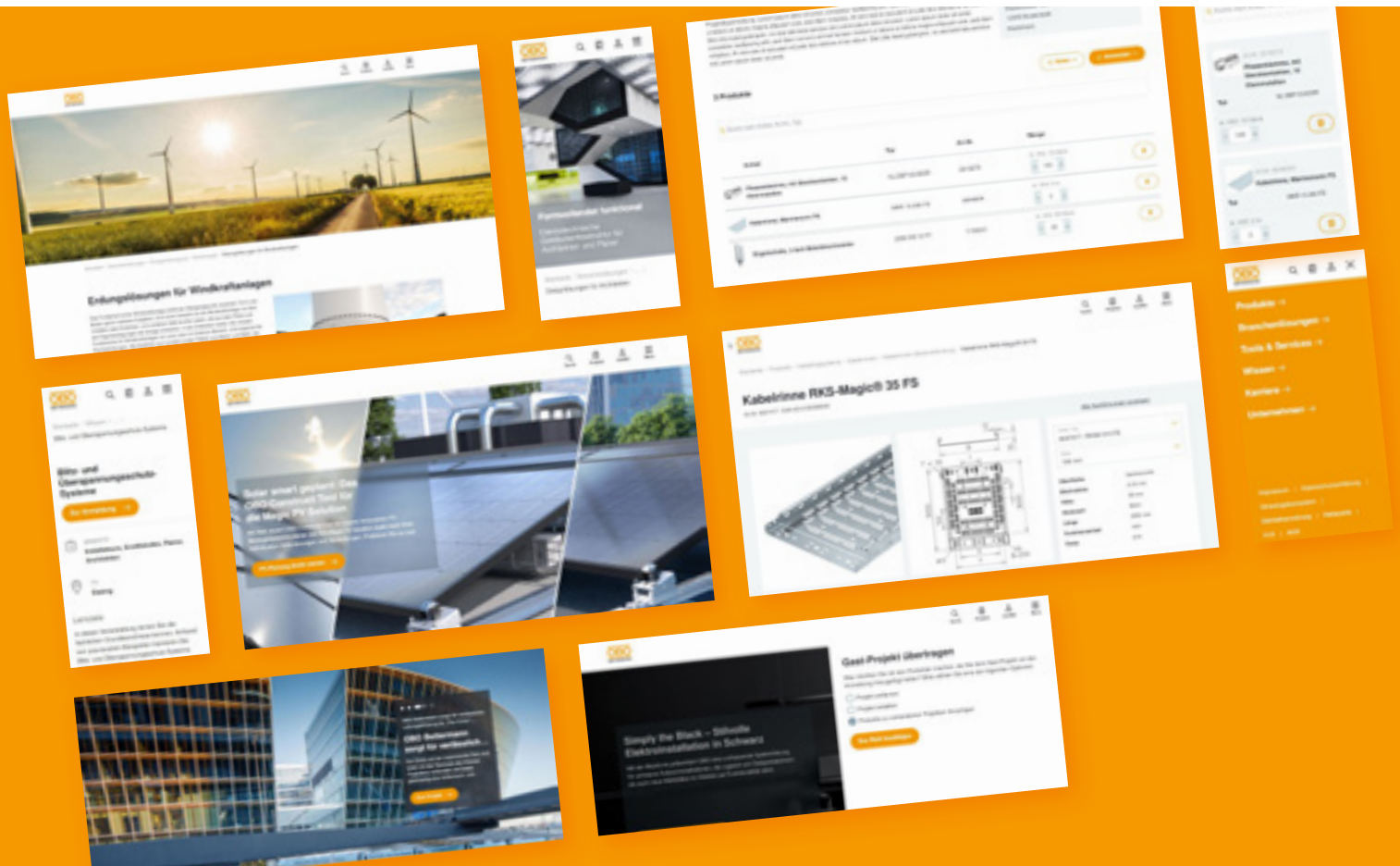


@obobettermanndeutschland



# New OBO website

Our vision is an integrated OBO service world



The OBO world is being presented to website visitors with a new design and lots of added benefits. The new websites in Germany and Austria went live in March. Now the sites are being rolled out internationally. This is being done in stages so that the local market conditions in each country can be taken into account. Steffen Sudhoff, Manager, OBO Digital department, describes the objective for the new websites:



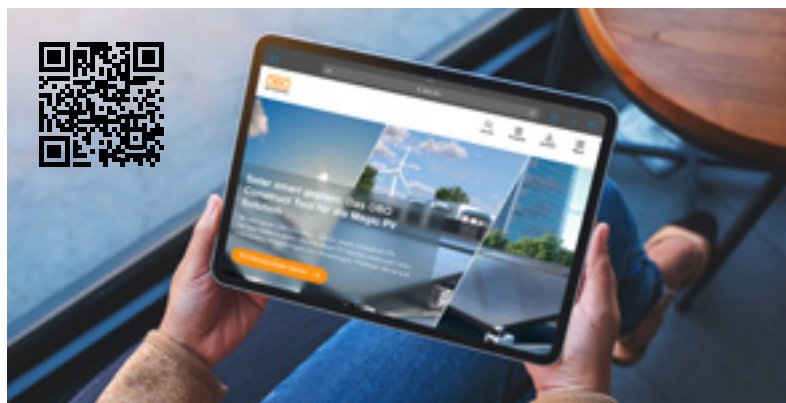
**Steffen Sudhoff**  
Manager, OBO Digital department

“Our vision is an integrated OBO service world. Under the guiding principle of **Building Connections**, we not only connect products with digital processes, we also connect people to high-quality solutions.”



## The myOBO service area makes project planning easy across platforms

In addition to the new, modern design and the improved user navigation, the biggest new feature of the website is the integrated myOBO service area. You can now not only manage your projects in the myOBO app, but also conveniently on the website. The advantage: Plan multiple projects at the same time – conveniently on your computer. The solution ensures seamless synchronisation between different devices and work environments. Whether at a desk or on the construction site – you can access your data, edit projects, create product lists and send them directly to wholesalers, from anywhere at anytime.



## Revised product range and new guide pages

In addition to the myOBO service area, the following new features mean an even more user-friendly experience when visiting the OBO websites:

- The **product area** has been revised: More information has been added and the contents have been structured more clearly. Now you can find all product-specific information directly in the corresponding product category.
- **Guide pages** in the new knowledge area help to answer the most frequently asked questions and provide information on specialised topics, such as lightning or fire protection. In future, this area will steadily grow and be brought to life.
- The quick retrieval of important information and contacts has been optimised. This includes, for example, the **dealer search** and the download area. The dealer search function helps you to quickly and easily find your local wholesaler. The **download area** contains a clear overview of all important documents, such as certificates, guidelines and catalogues.
- The **OBO Academy** website also has a new look, and guides you quickly and clearly to suitable seminars, planner days and online seminars.

## Focusing on added value

Similar to the OBO product solutions and digital tools, the new website also focuses on the benefits for customers. The most obvious benefit for website visitors is the time saved and reduced workload when planning and managing projects, thanks to the cross-platform use and direct synchronisation of myOBO. Planning and ordering has also been simplified, as logged-in users can save their project lists and access them at any time. Direct access to OBO Customer Service ensures fast assistance and advice. With these optimisations, the new OBO website helps professionals work smarter, faster and more connected.

### Product area



### Guide pages



### Dealer search



### Download area



### OBO Academy



## We look forward to your feedback

Take a look for yourself and experience the benefits of the new website. Do you have requests or suggestions? Feel free to let us know:

We want to continuously develop our website and look forward to your feedback.





# OBO marketing workshop

## Exciting conversations with our European subsidiaries

We welcomed our European subsidiaries to Menden for an international marketing workshop in January. For three days, we dedicated ourselves to exciting presentations and practice-oriented workshops on the latest marketing topics: from corporate design and sustainability to the website relaunches and our trade fair appearances.

The workshops offered us not only the opportunity to get to know each other personally, but also to gather valuable insights from the various subsidiaries. The three days together were a complete success and we are well positioned to shape the digital future of OBO together. Once again, many thanks to all participants for the fantastic discussions and great collaboration. We look forward to the next steps and to seeing you all again soon!



## A visitor becomes a new colleague

### VOKA Open Day was a huge success for OBO Belgium

Every first Sunday in October since 1991, many companies from a range of industries have opened up their gates to the general public on VOKA "Tag der offenen Tür" (Open Day). The event is well attended each year by hundreds of thousands of visitors. The Flemish business network VOKA is one of the largest and most dynamic in the Flanders region.

OBO Belgium used the open day to its advantage: firstly, OBO was looking for additional employees in a new city and a new environment; secondly, it was a chance to let local businesses and residents know that we now have a presence in their region. The VOKA Open Day offered the perfect opportunity to combine these two goals.

The visitors came for a tour through the new building and there was a lively entertainment programme, homemade burgers and even a special OBO beer.

The day was a huge success for OBO Belgium. The visitors gained an insight into who OBO is and what we stand for as an employer. There was an enthusiastic response: Several people expressed an interest in working at OBO and after several interviews Matthew Verleyen went from being a visitor to a colleague. He now supports OBO Belgium in the Inside Sales Support department. Welcome!





# New hires

## Welcome to the OBO family

OBO is continuing to grow – and not only with the expansion of various sites around the world, but also with new employees who are helping us shape the electrical infrastructure of

the future. We are pleased to welcome our new colleagues:



*Björn Peters*

### Björn Peters, HR Coordinator International

Björn Peters joined us on 1 February 2025 as the HR Coordinator International, supporting the international OBO subsidiaries in their HR processes.

### Jaime Duran Pizarro, Head of International Sales

Since 1 March 2025, Jaime Duran Pizarro has been responsible for France, Italy, Spain, Portugal, Brazil and the Latin America cluster in his role as Head of International Sales.



*Jaime Duran Pizarro*



*Tamer Kayan*

### Tamer Kayan, Business Development, OBO Holding companies

Since 1 April 2025, Tamer Kayan has been in the Business Development team, with the objective of further intensifying the exchange between OBO Holding and the international holding companies, in particular in the areas of sales and marketing.



## Visitors in Menden and Bugyi

The OBO India Sales Management team, together with Carsten Austinat from the OBO Academy, recently visited the OBO site in Menden to expand their knowledge of our product portfolio, and gained valuable insights during a factory tour. A highlight of the visit was a meeting with Ulrich Bettermann, who took time to personally greet the guests from India.

The trip continued on to Bugyi, Hungary, where the team toured the state-of-the-art production site with its multiple production units, including metal production, plastic production and a galvanising plant. A big thank-you to the Hungarian OBO team for the meticulous planning and warm hospitality.







# Innovations in production

## Automatic fastening process ensures more efficient workflows

We have developed an automated fastening process for producing the retaining clips for some of our cable trunking products. The system automates the fastening and feeding of the screw and retaining clip. These processes can take place at the same time as the injection moulding process. In addition, a flap on the clamp is also closed directly and automatically. The benefit: The automated fastening process saves both time and labour, because manual fastening and capping is completely eliminated. Combined with flexible conveyor technology, the finished parts are conveyed quickly and gently to their destination. An integrated inspection and sorting system removes any incorrectly screwed clamps. This is a prime example of increased efficiency in production.

In the last issue of OBO Blick we presented various innovations in OBO production processes, including, for example, our exoskeleton to reduce back strain when moving heavy loads, and HUGO – the driverless transport system. The automated fastening of retaining clips is yet another example of our future-oriented production processes.



# Current training programmes at the OBO Academy

Looking to expand your knowledge? You're in the right place!



The OBO Academy offers various training formats, in which participants are given up-to-date information about current developments, trends, standards and regulations. We place emphasis on practical solutions and first-hand information to assist you in gaining a competitive advantage with our expert knowledge.

Whether a seminar, planner day or online seminar – with our diverse range of training options, there is sure to be a format that suits you. We look forward to receiving your registration!

## Training course dates for the OBO Academy

<b>Tuesday, 12.08.2025</b>  <b>Fire protection seminar</b> OBO Campus in Menden	<b>Thursday, 18.09.2025</b>  <b>Seminar</b> Fire protection systems Hamburg	<b>Thursday, 25.09.2025</b>  <b>Seminar</b> Lightning and surge protection systems Rendsburg
<b>Tuesday, 21.10.2025</b>  <b>Seminar</b> Basics of underfloor systems OBO Campus in Menden	<b>Tuesday, 28.10.2025</b>  <b>Seminar</b> Lightning and surge protection systems Dasing	<b>Tuesday, 04.11.2025</b>  <b>Fire protection seminar</b> OBO Campus in Menden
<b>Tuesday, 11.11.2025</b>  <b>Planner day</b> Fire, lightning and surge protection systems Bremen	<b>Wednesday, 12.11.2025</b>  <b>One-day seminar</b> Fire protection systems Dasing	

All dates and registration options can be found here:



# Service & contact

You can contact our Customer Service department on:

**+49 (0)2373 89-2000**

**Monday–Thursday**  
07.30–17.00

**Friday**  
07.30–15.00

**info@obo.de**

## Building Connections

We strengthen relationships and establish connections – between our customers and the OBO brand, between our products and the systems for safe electrical infrastructure, between today and the future.

## Always at your service: Service@OBO

We support your projects not only with innovative production solutions, but also with an extensive service offering. Our motto: Always at your service. From the first information, to the construction phase, through to aftersales – we are there for you in every project phase.

- |                             |   |
|-----------------------------|---|
| ▪ <b>Information</b>        | We will keep you up to date.  |
| ▪ <b>Consultation</b>       | We will be glad to help you! Everywhere and in every project phase. |
| ▪ <b>Offer</b>              | We will set your project on the right track from the very start.    |
| ▪ <b>Construction phase</b> | We are always at your side for any issues that may arise.           |
| ▪ <b>Aftersales</b>         | We will also deal with your enquiries even after the event.         |

## Imprint

### Publisher and editor

OBO Bettermann Holding GmbH & Co. KG  
P.O. Box 1120, 58694 Menden, Germany  
Phone: +49 (0)2372 89-0  
Fax: +49 (0)2372 89-1238  
E-mail: [info@obo.de](mailto:info@obo.de)

[www.obo-bettermann.com](http://www.obo-bettermann.com)

## Image material

OBO Bettermann Holding GmbH & Co. KG  
Pages 3, 4, 5, 6, 7, 9, 10, 11, 12, 13, 14, 16,  
17, 18, 19, 20, 21, 22, 23, 25, 26, 28,  
29, 30, 31, 32, 33  
iStock pages 1, 13, 14, 19, 29  
Vecteezy page 3  
LKW WALTER page 15  
HGEsch page 24

## Contact

Please send any suggestions or questions to the editorial team:

Julia Belz  
Corporate Communications Manager

**info@obo.de**



**OBO Bettermann Holding GmbH & Co. KG**  
Hüingser Ring 52  
58710 Menden  
GERMANY

**Customer Service Germany**  
Tel. +49 (0)2373 89-2000  
info@obo.de

[www.obo-bettermann.com](http://www.obo-bettermann.com)

© OBO Bettermann 06/2025 EN