

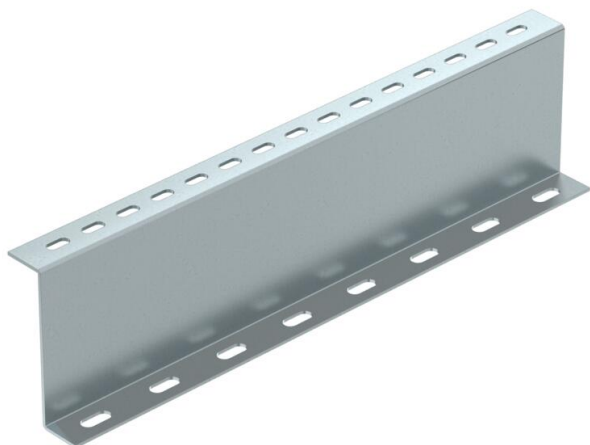
Technical data sheet

Support profile 100 FS

Item number: 6044591



Support profile for holding up the walkable cable tray system BKRS from the floor. Installation must be performed on both sides of the Z profile during the process of securing the system so that it is held up.



| | |
|-----------|------------------|
| St | Steel |
| FS | Strip galvanized |

Master data

| | |
|------------------------------------|--------------------------|
| Item number | 6044591 |
| Type | STP Z 1060 FS |
| Description 1 | Support profile |
| Description 2 | Z type, for BKRS |
| Manufacturer | OBO |
| Dimension | 100x600 |
| Colour | zinc |
| Material | Steel |
| Surface | Strip galvanized |
| Surface standard | DIN EN 10346 |
| Smallest sales unit | 1 |
| Unit of quantity | Piece |
| Weight | 127.34 kg |
| Weight unit | kg/100 pc. |
| CO2 Footprint (GWP) Cradle-to-Gate | 3,8245 kg CO2e / 1 Piece |

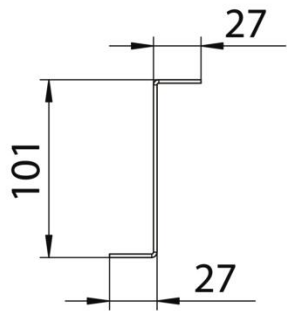
Technical data sheet

Support profile 100 FS

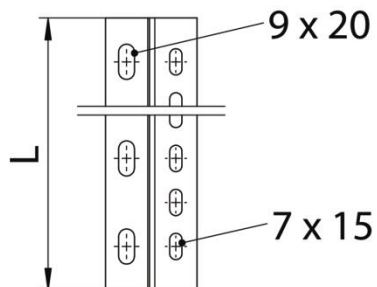
Item number: 6044591



Dimensions



| | |
|-------------|--------|
| Length | 600 mm |
| Width | 600 mm |
| Height | 100 mm |
| Dimension L | 24 in |
| Dimension L | 600 mm |



Technical data

| | |
|-----------------------------|---------|
| Material thickness (inches) | 0.08 in |
| Material thickness | 2 mm |
| Rustproof steel, pickled | no |