

Technical data sheet

Beam clamp SSP 20-40, VA M8

Item number: 1486292



This type of support clamp is pushed onto the support and fixed to the girder or flat iron using a pressure trough and bolt (M8). The hexagonal bolt has a WAF of 10 mm. In the clip element also two more M8 threads are introduced, for example to attach threaded rods.



A2	Stainless steel
2B	Bright, treated

Master data

Item number	1486292
Type	SSP 20-40 M8 A2
Description 1	Beam clamp
Description 2	heavyweight design
Manufacturer	OBO
Dimension	20-40mm
Material	Stainless steel
Surface	Bright, treated
Surface standard	
Smallest sales unit	25
Unit of quantity	Piece
Weight	27.8 kg
Weight unit	kg/100 pc.
CO Footprint (GWP) Cradle-to-Gate	1,3105 kg COe / 1 Piece

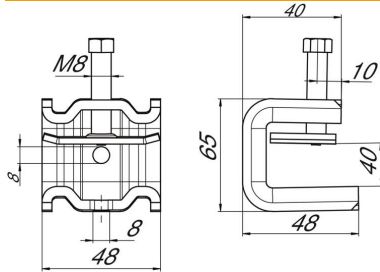
Technical data sheet

Beam clamp SSP 20-40, VA M8

Item number: 1486292



Dimensions



Dimension B	48 mm
Dimension H	65 mm
Dimension L	47 mm

Technical data

Connection type/component	Thread
Fastening type	Clamp
Breaking load F1	1.4 kN
Breaking load F2	1.3 kN
Flange thickness F max.	40 mm
Flange thickness F min.	20 mm
Suitable for metric threaded rod	8
Thread	M8
Thread metric	8
Hinge, adjustable	no
Hinged	no