

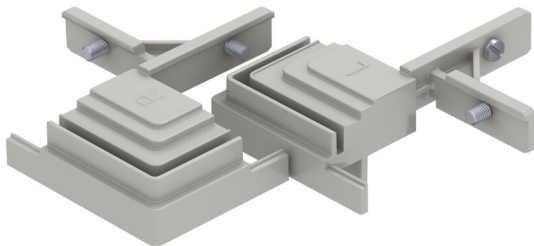
# Technical data sheet

## Construction set for trunking T branch and intersection

Item number: 7424821



For the construction-side creation of a trunking junction as a 90° angle, T-piece or crossing. A flushfloor end cover is also required for the creation of a 90° angle (order separately). Suitable for the OKA-G and OKA-W trunking systems.



**Zn** Die-cast zinc

### Master data

Item number	7424821
Type	OKA FB2 TX
Description 1	T and intersection fitting set
Description 2	for OKA-G and OKA-W
Manufacturer	OBO
Material	Die-cast zinc
Smallest sales unit	1
Unit of quantity	Piece
Weight	24.8 kg
Weight unit	kg/100 pc.
CO Footprint (GWP) Cradle-to-Gate	0,0539 kg COe / 1 Piece

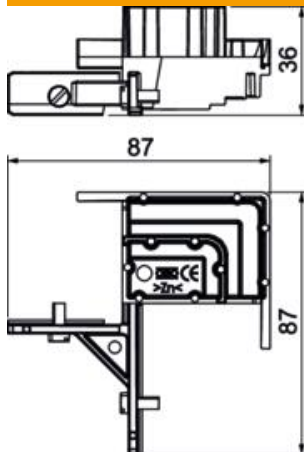
# Technical data sheet

## Construction set for trunking T branch and intersection

Item number: 7424821



### Dimensions



Length	87 mm
Width	87 mm
Height	36 mm

### Technical data

Mounting opening cover	no
Floor plate	no
Cover fastening, locking	no
Seal installation option	no
Installation opening for on-floor tank	no
Decouplable	no
Function	Branch
Suitable for expansion joint	no
Suitable for screed-flush closed underfloor ducts	no
Suitable for flushfloor, open underfloor trunking	no
Suitable for screed-covered underfloor ducts	no
Minimum screed height	40
With connection opening	no
With equipotential bonding	no
With separating retainer	no
With overhang	yes
Height-adjustment range, min.	0 mm
Removable cover	no