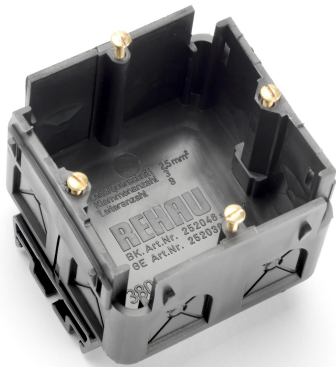


# Technical data sheet

## Accessory mounting box BK GD, single

Item number: 6133581



Single SIGNO accessory mounting box for the connection of power and data technology in the SIGNO BK, BA and BS trunking systems.  
Toolless mounting through fixing with an eccentric rotational lock and time-saving cable connection.



**PP** Polypropylene

### Master data

|                                   |                         |
|-----------------------------------|-------------------------|
| Item number                       | 6133581                 |
| Type                              | BK GD SW                |
| Description 1                     | Accessory mounting box  |
| Description 2                     | SIGNO BK black          |
| Manufacturer                      | OBO                     |
| Dimension                         | 62x70x71                |
| Colour                            | Jet black; RAL 9005     |
| Material                          | Polypropylene           |
| Smallest sales unit               | 10                      |
| Unit of quantity                  | Piece                   |
| Weight                            | 3.9 kg                  |
| Weight unit                       | kg/100 pc.              |
| CO Footprint (GWP) Cradle-to-Gate | 0,3149 kg COe / 1 Piece |

### Dimensions

|        |       |
|--------|-------|
| Length | 71 mm |
| Width  | 70 mm |
| Height | 62 mm |

# Technical data sheet

## Accessory mounting box BK GD, single

Item number: 6133581



### Technical data

|                             |           |
|-----------------------------|-----------|
| Number of units             | 1         |
| Version for                 | Closed    |
| Fastening track             | Other     |
| Halogen-free                | yes       |
| With connection compartment | yes       |
| Box mounting type           | Rear wall |
| Accessory mounting type     | Bolts     |
| Strain relief option        | yes       |