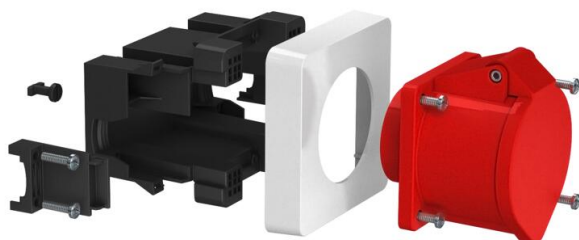


# Technical data sheet

## CEE socket unit, single, 32 A

Item number: 6119485



Accessory mounting box CEE, single, 32 A.

Scope of delivery:

- 1 front-locking accessory mounting box for 4-point fastening track of 52 x 52 mm to 70 x 70 mm
- 1 cover frame in pure white for hiding the fastening technology
- 2 external strain reliefs for jacketed cables of up to Ø 18 mm
- 2 sash locks for optional fastening to trunking bases with C rail
- 1 CEE socket 32 A with mounting accessories

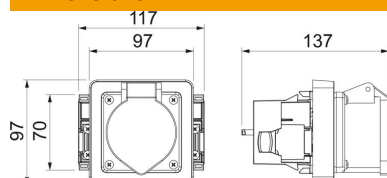
For installation in Rapid 80 device installation trunking and ISS service poles.

**PA** Polyamide

### Master data

Item number	6119485
Description 1	CEE accessory mounting box
Description 2	with CEE socket 32 A
Manufacturer	OBO
Dimension	118x98x125
Colour	Graphite black; RAL 9011
Material	Polyamide
Smallest sales unit	1
Unit of quantity	Piece
Weight	37.2 kg
Weight unit	kg/100 pc.
CO Footprint (GWP) Cradle-to-Gate	0,8002 kg COe / 1 Piece

### Dimensions



# Technical data sheet

CEE socket unit, single, 32 A

Item number: 6119485



## Technical data

Number of units	1
Version for	Closed
Fastening track	Other
Halogen-free	yes
With connection compartment	yes
Strain relief option	yes